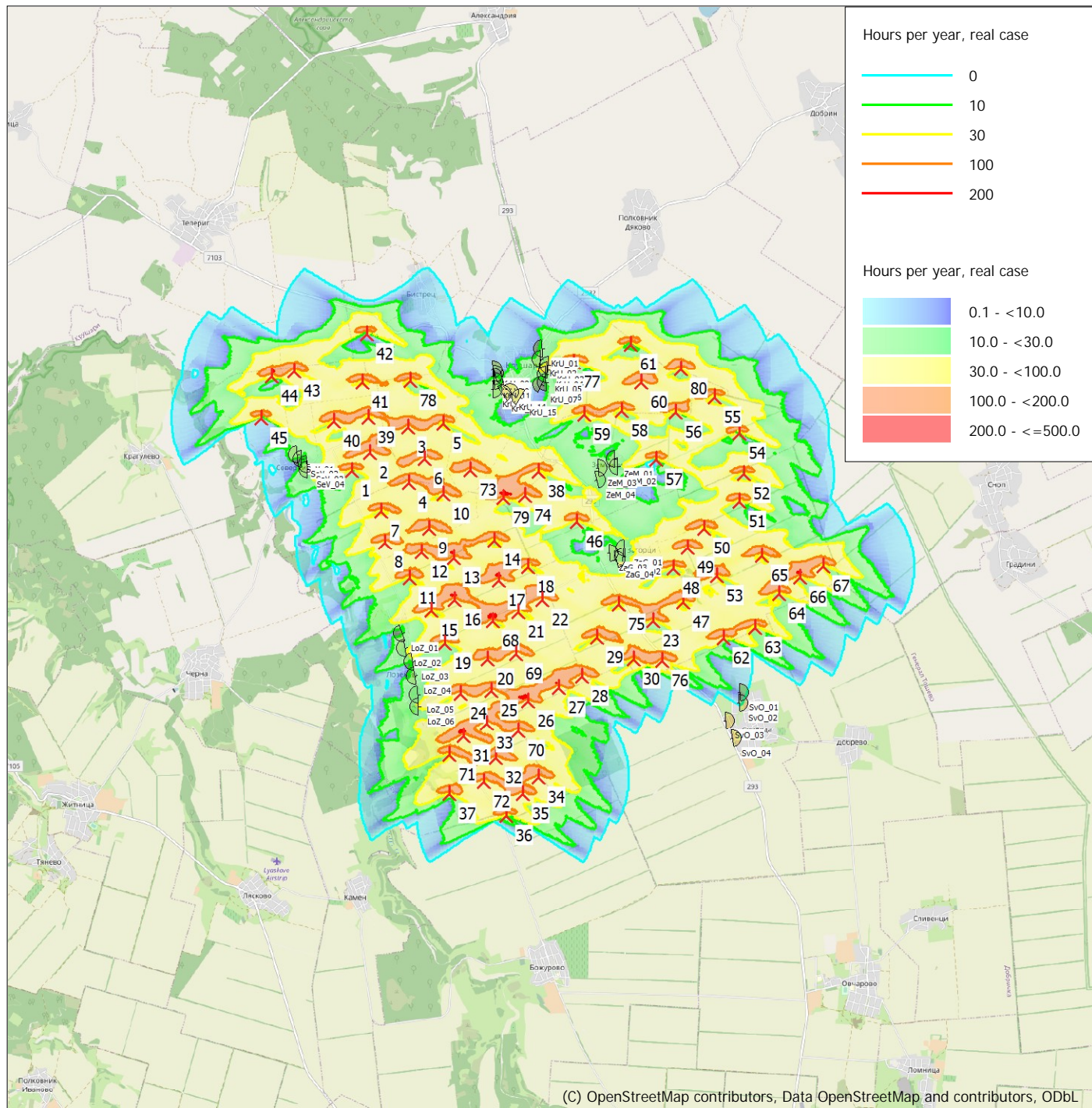


SHADOW - Map

Calculation: Real_Case_Operational_Time



0 2.5 5 7.5 10km

New WTG

Map: EMD OpenStreetMap, Print scale 1:125,000, Map center Geo WGS84 East: 27.762403° E North: 43.780840° N

Shadow receptor

Flicker map level: Project Wizard Elevation Data Grid (EU-DEM: Pan-European DSM - 25m grid - Version 1.1)

Time step: 3 minutes, Day step: 7 days, Map resolution: 20 m, Visibility resolution: 10 m, Eye height: 1.5 m